

Friends Of Passmores



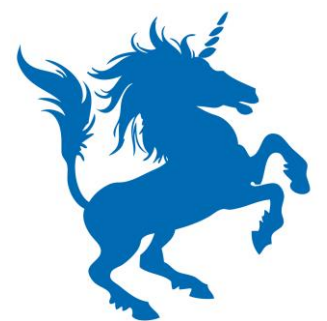
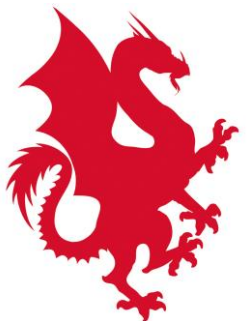


Passmores Academy

Year 9 – Options Evening

Equity Class

20 March 2024



**The average
person
changes jobs
on average, 12
times during
their career**

**What are your
plans after
Passmores?**

Do you know?

**Many jobs you
may do in the
future don't
exist yet!**



Problem solving

Practical

Interpretation

Collaboration

Data handling

Creativity

Analysis

Debating

Reasoning

Research

Listening

Evaluation

Some advice about choices....

Give yourself the best chances for the future, pick a balance

Don't pick subjects because of a teacher

Don't pick subjects because your friends are doing them

Don't make all of your decisions tonight, you have time!

Pick subjects you **ENJOY**

Pick subjects you are **GOOD** at

Pick subjects which play to your **STRENGTHS**

Pick subjects which **DEVELOP** particular skills

**What does Year
10 and 11 look
like?**

What types of courses could you choose?

GCSEs – Linear courses

- **Exams at the end of 2 years**
- **Knowledge and skills developed over the 2 years**
- **Memory and retention**

Vocational Courses

- **Coursework**
- **Exams – vary depending on the course**
- **Ongoing assessment**

Grading system



Compulsory subjects with exams

- **English Literature (in Year 10)**
- **English Language (in Year 11)**
- **Maths**
- **Science BTEC Level 1**
- **Hospitality and Catering**

Compulsory subjects with no exams

- **PE**
- **i-Future**

Then **3 more** from...

- Art & Design – Fine Art*
- Art & Design – Textiles*
- Art & Design – 3D Design (D&T)*
- Art & Design – Photography
- Citizenship
- Computer Science
- Drama
- Geography
- History
- Music
- Study Support (Used to support literacy, numeracy, homework, other)

*Only 1 from these 3 courses

Or these Vocational courses..

- **Child Development**
- **Creative Media**
- **Creative & Technical Enterprise**
- **Sport**
- **Land Based Studies at Pets Corner (counts as 2 options)**

Please also select a **reserve choice – why?**

- **Low numbers**
- **Timetable clash**

Complete your choices via the SIMS app

SIMS Student account

- **Students – check your emails!**
- “How to....” guide sent today
- Tutor time sessions after Easter
- Problems? Contact the DataTeam

Other advice

- Monday's assembly
- Speak to your teachers
- Look at your data over Easter
- Mrs Moore (SENCO)
- Mrs Kay (Careers)



Next Steps.....

Tonight - Carousel of sessions

- **Please stick to the allocated slots**
- **Speak to staff**
- **Speak to Passmores existing students**
- **Don't make decisions quickly**

Dates

27th March – Spring Term reports sent home

17th April – Year 9 Parents/Carers Evening

26th April – Options Deadline (Online form only)

WELCOME TO PETS' CORNER



Karen Hughes
and
Miss Poulter.



PETS' CORNER AS AN OPTION!

About Pets' Corner

Courses offered

What you will learn

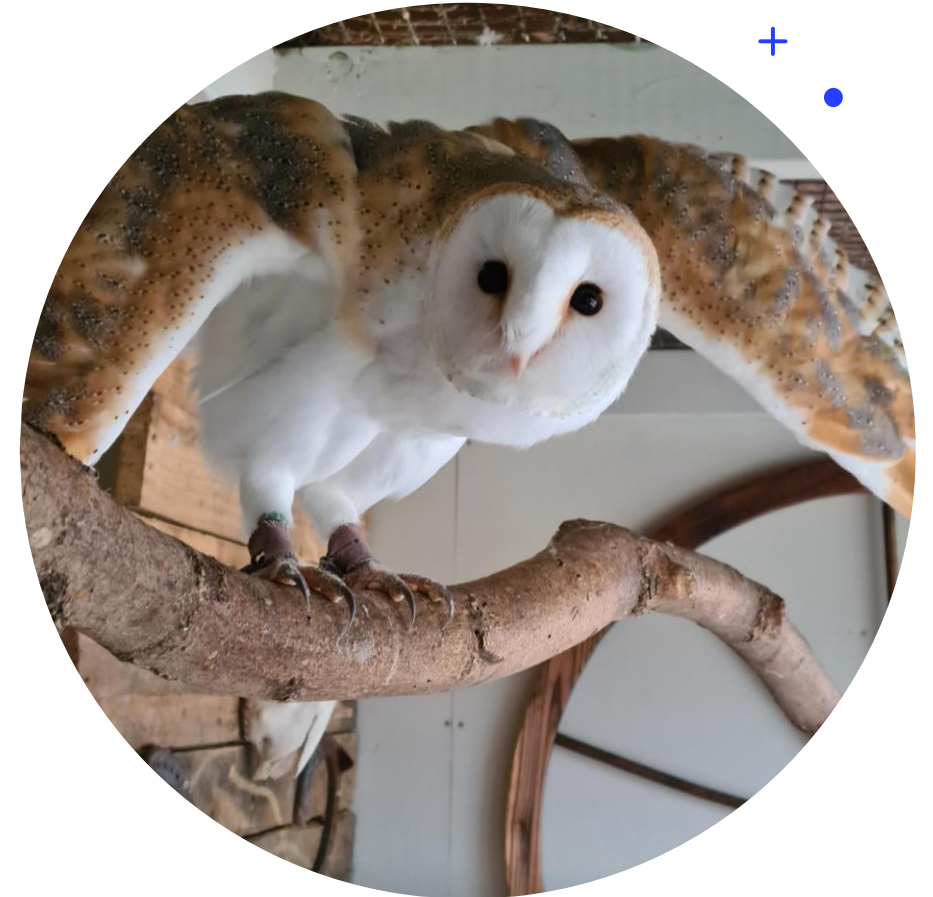
Qualifications and progression

About Pets' Corner

Many of you will have already visited Pets' Corner over the years, now you have a chance to get more involved with the animals by choosing Pets' Corner as an option.

The farm has been an important part of Harlow since 1966, housing a mix of domesticated and exotic animals for public to come and see.

Working alongside Writtle college, we now offer level 1 Landbased and workbased City & Guilds qualifications giving students a basic knowledge of animal welfare and animal husbandry.



LEVEL 1 WORKBASED ANIMAL CARE

This is a very basic course in how to look after and care for the animals at Pets' Corner.

The course is very hands on and mainly practical based with practical assessments as well as questions and answers.

LEVEL 1 LANDBASED STUDIES.

This is a similar qualification to the Workbased Animal care but focuses a little more on theory and written assessments.

Students will work closely with the animals but create written work to back up their knowledge.



As a student, you will get a chance to work closely with the animals, learning how to handle them and how to look after their needs. We use theory and worksheets to evidence knowledge for assessment.



The courses are usually run over 2 years offering 3 levels of attainment,

Award, Certificate and Diploma.

As a student, you would be assessed to ensure you are entered at the correct level for you to be able to achieve the qualification, also allowing for progression the following year.

PETS' CORNER

+



o



.



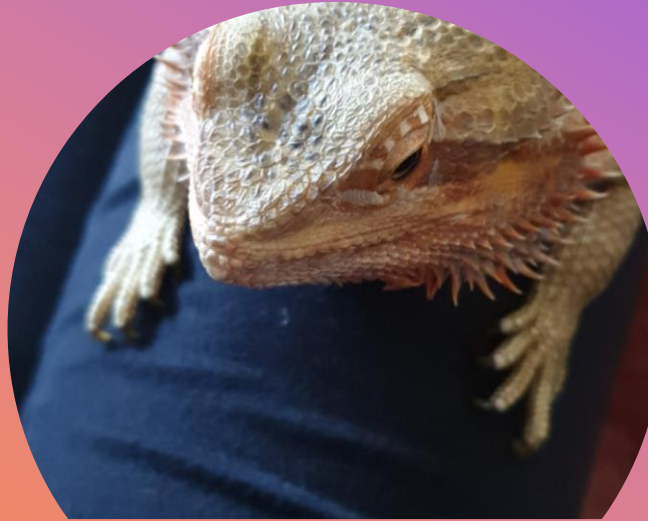
+



o



.



THANK YOU

Karen Hughes

Karen.hughes@harlow.gov.uk

Next steps and where to go....

U Unicorn (blue)

D Dragon (red)

L Lion (Yellow)

G Griffin (Green)

Starts 0... downstairs

Starts 1... upstairs



Upstairs Corridor

Y101
Creative Media



Downstairs Heartspace

Y005 Goldfish Bowl
Sport

Upstairs

D101
Photography

D103
Textiles

D105
Hospitality & Catering



Upstairs

G101
Creative & Technical
Enterprise

G102
Computer Science

G016
Child Development

Upstairs

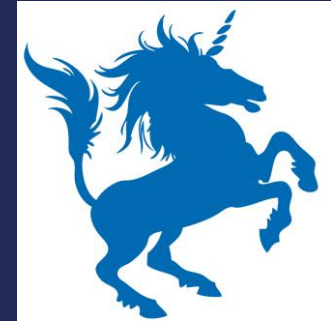
L101
French

L102
Spanish

L104
Art

L107
Drama

L110
Music



Downstairs

U001
Citizenship

U002
Psychology

U005
Geography

U007
History

Downstairs

Dragon Corridor
Art & Design
(3D Design)

Downstairs

L005
Triple Science

Year 9 Options Evening 2024

