

# New uniform from September 2026



- Following consultation with staff, students, parents and carers in February 2026, our uniform will be changing from September 2026.
- There will be a two-year transition period from September 2026 to September 2028 with all current students allowed to choose which version of the uniform to wear until all are required to wear the same style.
- All new students starting with us in September 2026 will wear the new uniform.



# The school uniform consists of:

- Navy jumper with the school logo or a navy blazer with the school logo
  - Plain dark grey or black trousers
  - Pleated dark grey skirt (worn below the knee)
  - Navy or white polo/shirt
  - Grey, navy or black socks/tights
  - Plain black footwear
  - Lanyard (to be worn with card showing correctly)
  - School tie with House cog - KS4 only (optional)
- Outdoor clothing such as coats, hoodies, hats, gloves, scarves etc. to be removed once inside the school building.



# Choice of jumpers



Round neck Sweat



¼ Zip Sweat



Knitted V-neck Jumper



V-neck Sweat



# Standards

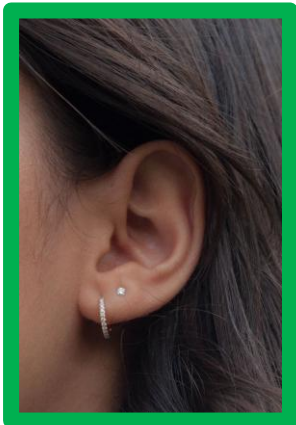


**Jewellery** should be kept to a **minimum** for safety reasons -

- Earrings must be small studs or cuffs
- Rings must be small - sovereign type rings are not allowed
- Nose studs (not rings) are allowed - must be small and discreet



YES



NO



# Standards



**Skirts** must be pleated and fall below the knee when standing upright and must not be rolled, tucked, altered, or worn in a manner that shortens the length.



YES



NO



# Standards

- **Nails** should be no longer than the tips of the finger for health and safety. This is especially important for practical lessons.
- **Make up**, if worn, should be natural looking and minimal, this includes eye make up and eyelashes.



# Standards

- **Eyelashes**, must be natural look. 'Strip lashes' and 'Russian lashes' are not acceptable.

YES



NO



# Footwear

Must be **all** black.

This is always the case and includes when young people may have an injury.

We do not allow –

- Crocs
- Boots higher than the ankle
- High heels
- Steel toe caps
- Sliders



# Acceptable footwear



# Not acceptable footwear



# PE uniform

- Royal blue polo shirt or t-shirt
  - Navy blue shorts OR navy-blue leggings OR navy-blue tracksuit bottoms
  - Trainers (with non-marking soles)
  - White PE socks OR royal blue football socks
  - Navy blue hoodie (optional)
  - Tracksuit top (optional)
- 
- Students must bring their full PE kit to every lesson. If there are RARE occasions when Passmores PE kit cannot be worn, then plain navy or blue PE kit will be allowed. A note from the parent/carer must also be given to the relevant PE teacher. Failure to do so will result in sanctions.



# PE Uniform



# Optional Items

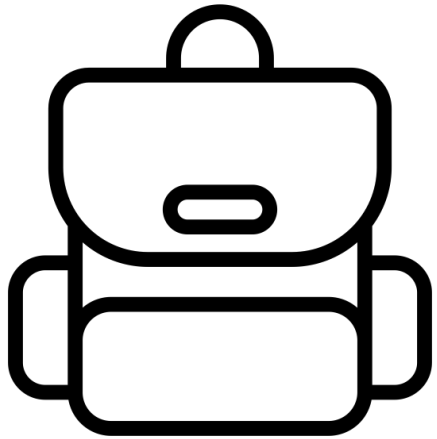


All items can be purchased without a logo.

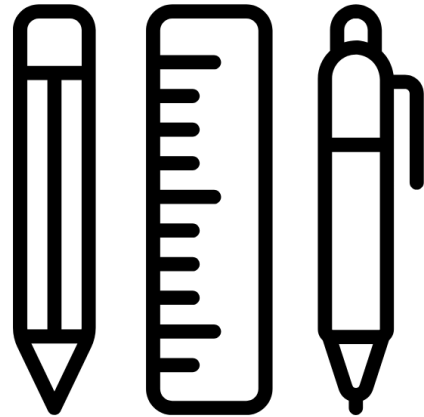
Year 8-11  
only



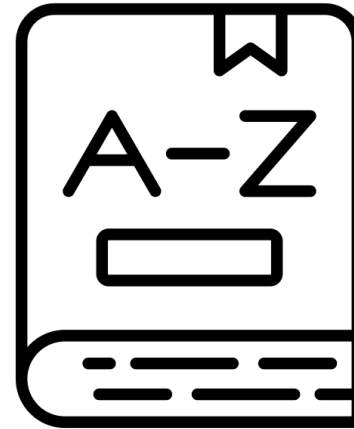
# Equipment



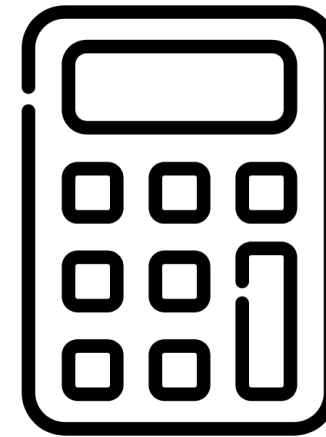
Appropriate bag



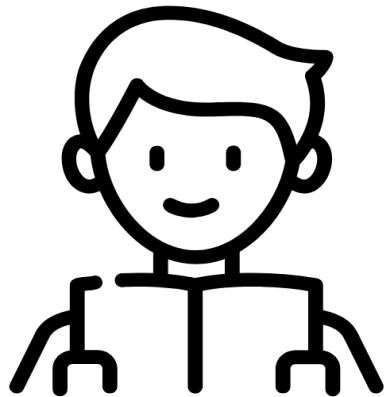
Stationery



Dictionary



Scientific calculator



Reading Book



Lanyard



Yondr pouch

**NOT** PERMITTED  
Pencil sharpeners  
Maths compass



# Our local suppliers are:

[CREATE INDENTITEE LIMITED](#)



Top Form, 90-91 The Stow, Harlow, CM20 3AP – supply skirts and general uniform



# Timings of the school day (September 2026)

## Timings of the school day



	Key Stage 3
<b>Registration</b>	08:45-08:55
<b>Period 1</b>	08:55-09:55
<b>Period 2</b>	09:55-10:55
<b>Break</b>	10:55-11:15
<b>Period 3</b>	11:15-12:15
<b>Period 4</b>	12:15-13:15
<b>Lunch</b>	13:15-13:45
<b>PCT</b>	13:45-14:15
<b>Period 5</b>	14:15-15:15
<b>After school</b>	Clubs (NOT MONDAYS)

	Key Stage 4
<b>Registration</b>	08:45-08:55
<b>Period 1</b>	08:55-09:55
<b>Period 2</b>	09:55-10:55
<b>Break</b>	10:55-11:15
<b>Period 3</b>	11:15-12:15
<b>Period 4</b>	12:15-13:15
<b>PCT</b>	13:15-13:45
<b>Lunch</b>	13:45-14:15
<b>Period 5</b>	14:15-15:15
<b>After school</b>	Clubs (NOT MONDAYS)